

**GENERAL
DEFINITIONS
AND INSTRUCTIONS
FOR GRADING
EASTERN WHITE
PINE BOARDS**

EWP GLOSSARY

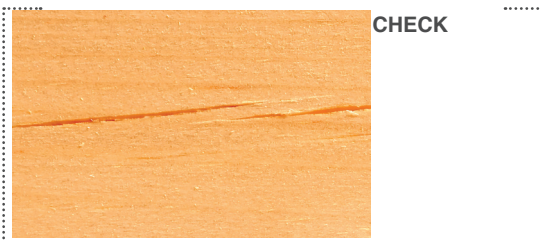
The purpose of this section is to provide additional guidance in the application of the Eastern White Pine grade rules. These guidelines are intended to assist in the proper application of the rules. They also are intended to assist in the proper handling of defects not clearly defined in the rules. They are not intended to modify or supersede any specific rule provision. Common sense and sound judgment must be used if the purpose of these guidelines is to be served.

All measurements are based on the actual dimensions of the piece unless otherwise specified except Split and Warp measurements are based on the nominal dimensions of the piece.

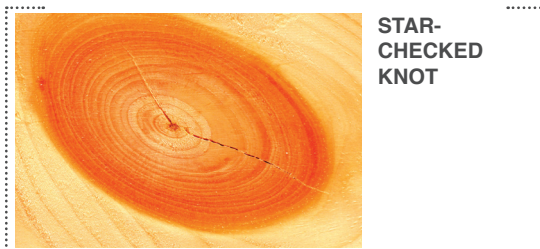
Checks	802.0
Compression Failures	804.0
Cutting Provision if D Select.	806.0
Decay	808.0
Edge Break.	810.0
Grade Face	812.0
Knots	814.0
Knot Holes	816.0
Manufacture	818.0
Manufactured Hole.	820.0
Pitch	822.0
Planer Tear	824.0
Pockets (well scattered)	826.0
Grading Rough Stock.	828.0
Saw Cuts	830.0
Seams	832.0
Shake	834.0
Skip.	836.0
Splits.	838.0
Wane	840.0

802.0 CHECKS — Check provisions, unless otherwise noted, apply to the grade face. Limitations apply to the longest or widest check present. “Barely perceptible” means visible only when held at a favorable angle to the light. Roller checks are measured and graded the same as seasoning checks. The reverse face of Finish and Premium shall permit checks equivalent to the face of Standard (1/4 the length to 3’).

A check in a branch or spike knot is considered a defect if it extends outside the knot or if it is open more than 1/16”. If the check extends outside the knot, it is evaluated as an edge break, para. 810. If it is open more than 1/16”, it is evaluated as a hole.



A star check, a check within a knot, is considered no defect.



804.0 COMPRESSION FAILURES — Compression wood in damaging form may have a visible failure (seasoning/drying check due to abnormal shrinkage) or cause the board to warp. If the check found in the compression wood is open 1/16” or less it is limited to maximum red knot size listed for the corresponding grade of the board. If the check found in the compression wood is open greater than 1/16” it is limited to the width of the maximum allowable hole listed for the corresponding grade of the board. Warp and its limitations are defined in para. 752.0.



806.0 CUTTING PROVISION FOR D SELECT — One 5% cut is allowed in a 10’ or longer board. The 5% cut means 5% of the length of the board. The allowable 5% cut is 6” in 10’, 7.2” in 12’, 8.4” in 14’ and 9.6” in 16’. More than one defect is acceptable in the one 5% cut allowed per board.

808.0 DECAY --- Incipient decay is treated as sound. Advanced decay is treated as unsound. Advanced decay is allowed only in the grades of Standard and Industrial.

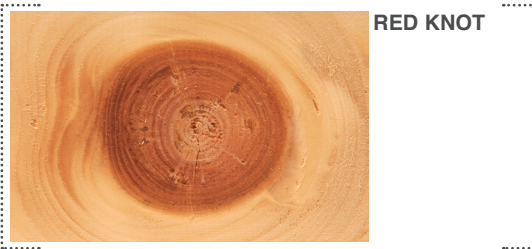


810.0 EDGE BREAK — The edge break allowed in Standard grade may penetrate no more than 1/3 the width from the edge of the board. The length of the break is limited to the width of the piece.

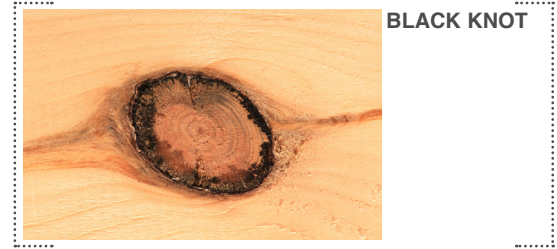
812.0 GRADE FACE — The grade face is the better face of the two wide faces of a board. The grade face is the best grade that the board will make. The reverse face is the face of the board opposite the grade face.

814.0 KNOTS — The size of a knot is determined for each face separately. A size measurement is an average developed from the widest and narrowest points of a knot. This is true for round, oval, branch or spike knots. All knots are measured on the face of the board that is being graded. When two knots touch measure them as one knot. Knot sizes for odd widths are halfway between those specified for even widths.

A 'red' knot is intergrown with the wood surrounding it. A knot is considered 'red' if at least 25% of its margin is intergrown with the surrounding wood.



If less than 25% of the margin is intergrown with the surrounding wood, the knot is classified as a 'Black' knot. A 'Black' knot is noticeably encased by bark or pitch. 'Black' knots that become loose are treated as holes.



An unsound knot is a knot that contains decay. Unsound knots in Premium are occasional; one in ten. The decay is limited to inside the knot.



Select grades limit the number of knots allowed on the grade face, but not how they are spaced on the board.

The maximum knot sizes listed for the Common grades may be exceeded in pieces of otherwise exceptional quality. Exceptional quality is interpreted as a board, excluding the oversize knot, that meets all other requirements for the next higher Common grade. A red knot could be approximately 1/2" larger. A black knot could be approximately 1/4" larger.

In Premium, Black Knots of Finish size or smaller are not limited as to number.

On the grade face of a 10' and longer Premium board, the number of black knots larger than a maximum Finish size black knot is limited to three. If there are two maximum Premium size black knots, no other black knot can be larger than a Finish size black knot.